



OPTIONAL ACCESSORIES:

• Tail Stock.

TS-4 for CC-6"

TS-5 for CC-8"

• 3-Jaw Chuck

6" 3-Jaw Chuck for CC-6"

8" 3-Jaw Chuck for CC-8"

SIMPLE INDEXING SPACER

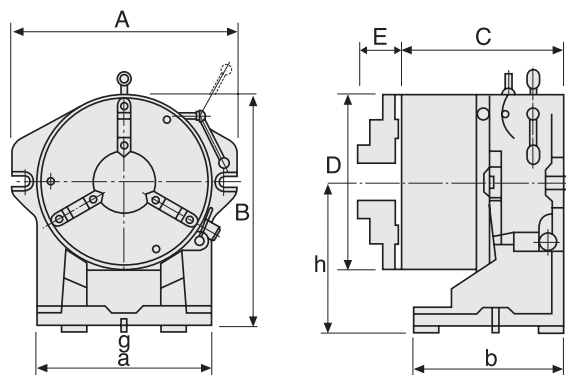
Model: CC-6", CC-8"

The Simple Indexing Spacer can be mounted on milling machines, drilling machines and other machine tool where an indexing facility is required. The 3-jaw chucks of both the CC-6" and the CC-8" models have a large through bores of 44mm and 63mm respectively.

These Indexing Spacers are designed for using in horizontal or vertical positions. The master Indexing plate has 24 divisions and is permanently fixed inside the indexer. Divisions of 2, 3, 4, 6, 8 and 12 can also be achieved by the use of the sub-plates, which can be installed quickly following these steps:

1. Open Rear Cover
2. Insert Plate
3. Close Cover
4. Loosen Locking Handle
5. Move Dividing Pin so as to separate it from the Master Plate.
6. Turn the Chuck. When the Master Plate and Sub Plate are aligned the Pin will lock into the slot automatically.
7. Fasten Locking Handle ready for machining.

REMARK: "Operation and Service Manual" is included for reference



SPECIFICATIONS

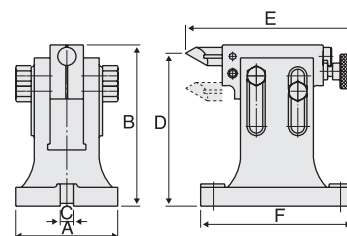
Model	DIRECT INDEXING	A	B	C	D	E	a	b	h	g	Diameter of hole(turret)	Weight (kg)
CC-6"	2,3,4,6	260	218	133	167	27	190	110	125	16	44	23
CC-8"	8,12,24	312	270	157	210	28	220	135	150	16	63	41



TAIL STOCK FOR CC, CS-TYPE

Model: TS-4, 5

When using indexing spacers in vertical position, these Tail Stocks can be used to support the workpiece and ensure accurate alignment.



SPECIFICATIONS

Model	Suitable for	A	B	C	Center Height		E	F	Weight (kg)
					Max.	Min.			
TS-4	CC-6"/CS-6"	125	147	16	138	115	194	177	8.2
TS-5	CC-8"/CS-8"	123	194	16	170	130	204	184	8.6

Unit: mm