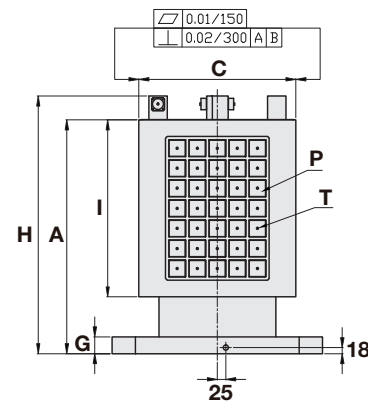
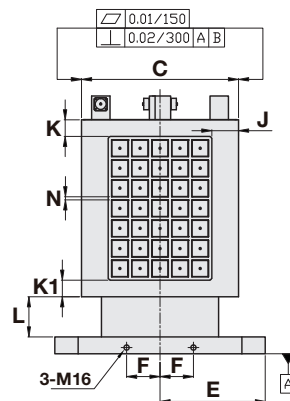
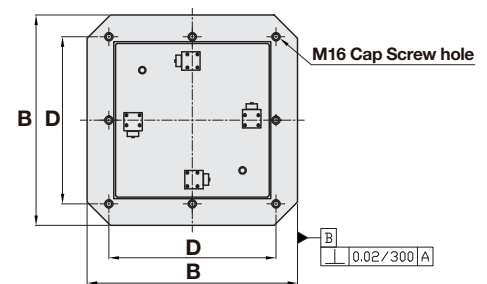
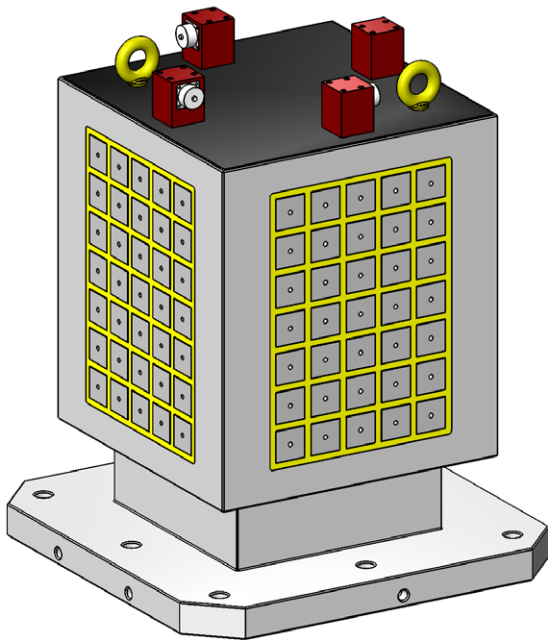


# M/C SQUARE ELECTRO-PERMANENT MAGNETIC COLUMN

- Applicable to all kinds of horizontal computer processing machine.
- Magnetic force as high as 1250kgf/100cm<sup>2</sup> ± 5%. (4 magnetic poles)
- Able to provide five-sided processing, effectively save the processing time, improve processing efficiency.
- Workpiece thickness requirement above 25mm.



## SPECIFICATIONS

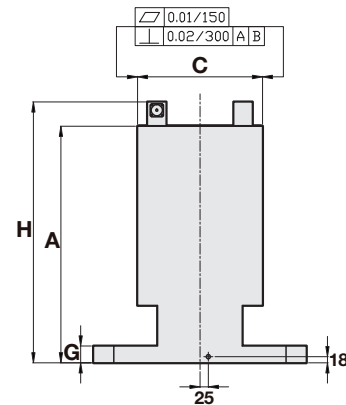
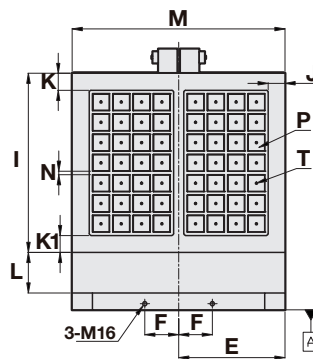
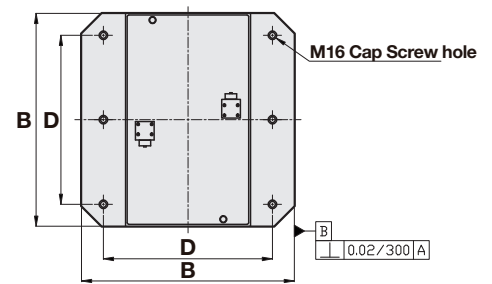
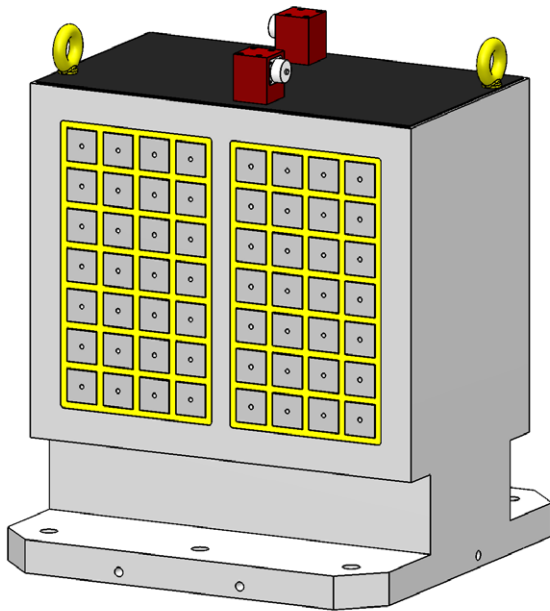
Unit: mm

Model	A	B	C	D	E	F	G	H	I	J	K	K1	L	Magnetic surface	N
ECMC-HSF-400	500	400	370	320	200	55	50	571	330	60	40	40	120	330X370	10
ECMC-HSF-500	620	500	470	400	250	75	50	710	450	50	40	40	118	450X470	
ECMC-HSF-630	700	630	470	500	315	100	50	771	530	80	50	50	120	530X470	
ECMC-HSF-800	800	800	620	640	400	135	50	871	630	65	70	70	120	630X620	

Model	T	P	Number of magnetic pole	Total magnetic force (single side) kgf±5%	Weight (kg)	Voltage	Controller (Included)	Voltage	Controller (Included)
ECMC-HSF-400	M8	50X50	16X4	5000	390	AC 220V	1N1C	AC 380V ~ 440v	1N1C
ECMC-HSF-500			36X4	11200	510		1N1C		1N1C
ECMC-HSF-630			35X4	10900	760		1N1C		1N1C
ECMC-HSF-800			64X4	20000	1380		1N2C		1N2C

# M/C DOUBLE-SIDED ELECTRO-PERMANENT MAGNETIC COLUMN

- Applicable to all kinds of horizontal computer processing machine.
- Magnetic force as high as 1250kgf/100cm<sup>2</sup> ± 5%. (4 magnetic poles)
- Able to provide five-sided processing, effectively save the processing time, improve processing efficiency.
- Workpiece thickness requirement above 25mm.



## SPECIFICATIONS

Unit: mm

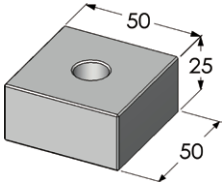
Model	A	B	C	D	E	F	G	H	I	J	K	K1	L	M	Magnetic surface	N
ECMC-HDF-400	500	400	270	320	200	55	50	571	370	45	30	30	80	400	370X400	10
ECMC-HDF-500	600	500	320	400	250	75	50	690	430	35	30	30	118	500	430X500	
ECMC-HDF-630	700	630	370	500	315	100	50	771	530	50	50	50	120	630	530X630	
ECMC-HDF-800	800	800	420	640	400	135	50	871	650	75	50	50	100	800	650X800	

Model	T	P	Number of magnetic pole	Total magnetic force (single side) kgf±5%	Weight (kg)	Voltage	Controller (Included)	Voltage	Controller (Included)
ECMC-HDF-400	M8	50X50	25X2	7800	310	AC 220V	1N1C	AC 380V~ 440v	1N1C
ECMC-HDF-500			42X2	13100	480		1N2C		1N2C
ECMC-HDF-630			56X2	17500	700		1N2C		1N2C
ECMC-HDF-800			90X2	28100	1150		1N3C		1N3C

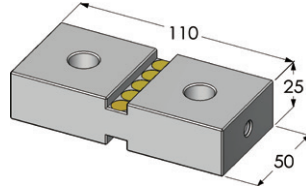
# OPTIONAL ACCESSORIES

(For Pole Size: 50x50mm)

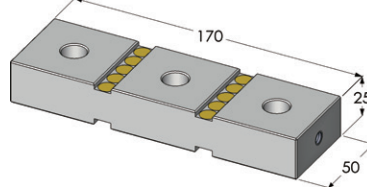
**Magnetic Soft Jaws**  
ECMC-MSJ125B



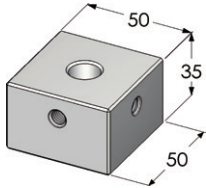
ECMC-MSJ225B



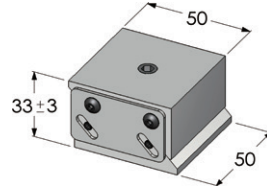
ECMC-MSJ325B



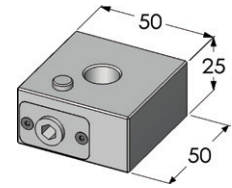
**Fixed Soft Jaws**  
ECMC-FSJ50B



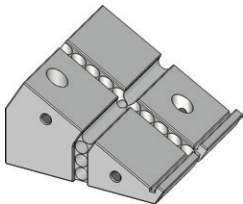
**Moveable Spring Pads**  
ECMC-MSP50B



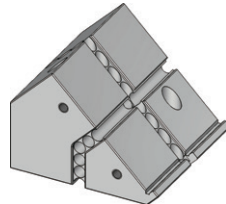
**Top Pin Soft Jaws**  
ECMC-TP50B



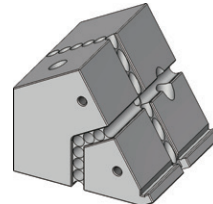
**Magnetic Angle Soft Jaws**  
30°  
ECMC-ANG30B



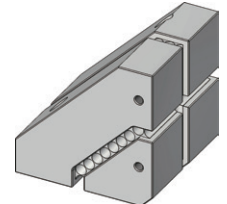
45°  
ECMC-ANG45B



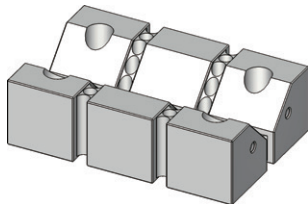
60°  
ECMC-ANG60B



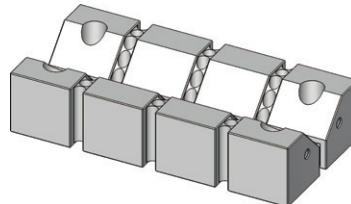
90°  
ECMC-ANG90B



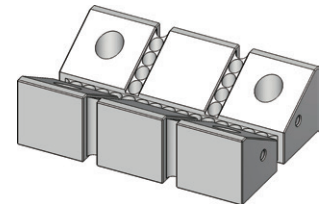
**Magnetic Angle Soft V Jaws**  
90° (3)  
ECMC-ANG90V3B



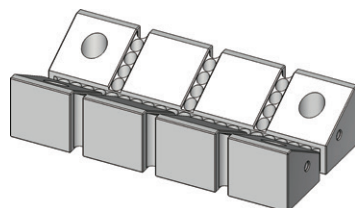
90° (4)  
ECMC-ANG90V4B



120° (3)  
ECMC-ANG120V3B



120° (4)  
ECMC-ANG120V4B



**Magnetic Angle Soft V Jaws**  
ECMC-MSP

